



PUMA
ELI

Stabilimento / Plant
Via Bicocca, 14/C
40026 Imola (BO) - Italy
Tel. +39 0542 653441
Fax +39 0542 653601

castellini@castellini.com

Sede Legale ed Amministrativa / Head Quarter
CEFLA s.c. - Via Selice Prov.le, 23/a
40026 Imola (BO) - Italy
Tel. +39 0542 653111
Fax +39 0542 653344

www.castellini.com



Style makes for well-ordered movement


CASTELLINI
PASSION FOR DENTISTRY SINCE 1935











Ergonomics is also a question of organisation and discipline



Dentist's module

Compact, manoeuvrable and evenly balanced, the dentist's module can be positioned to match both the type of treatment and the dentist's operating style. The reflex arm levers on the over-the-patient delivery model and the length of the tubing both help reduce the physical stress undergone by the wrist.

The considerable tubing extension and minimal height of the support arms ensure maximum freedom of module movement and prevent any interference with the operating light. A large stainless steel tray holder can be coupled to the dentist's module. To ensure flexibility and enhanced comfort it is both position-adjustable and easily removed for sterilisation purposes.

Dentist's side



The hanging tubing module is characterised by symmetrical design. Optimised vertical excursion allows the dentist to bring the instruments to the most convenient height. Instruments are arranged ergonomically in an alternate-angling layout that makes them easier to grasp and ensures their movement is carried out safely. The tray holder rotates over the dentist's module and can be positioned above the patient. Made of stainless steel, the tray holder is an optional.



Control panel

Order and simplicity - as exemplified by the simply-arranged membrane-protected soft switch keys and large backlit X-ray viewer - provide the conditions to make work much more effective. The new control panel features a digital display that enhances control and management of both instrument working parameters and Autosteril ST cycle execution times.

Controls for the adjustment of micromotor and turbine speed plus scaler power all have user-friendly icons, as do the controls for the following:

- operating light on/off
- direct patient chair movement
- patient chair programming and calling up of programmed positions, rinse and patient entry/exit positions
- cup filling and cuspidor rinsing
- switch for selecting cooling liquid (mains water / separate supply system)
- micromotor rotation reverse
- fiber optic on/off
- X-ray viewer on/off



Implantor LED Micromotor

Latest-generation brushless micromotor, with its low-noise operation and minimal weight, Implantor LED is vibration-free and characterized by extremely high torque and outstanding reliability. Top performance for all specialist applications. Completely autoclavable.

Micromotor features:

- 100 up to 40,000 rpm with 1:1 ratio
- electronic torque control up to 4.5 Ncm
- possibility of pre-setting maximum speed



Handy Power Micromotor

Handy Power is an extremely lightweight, compact brushless micromotor, available with or without LED lighting. Exceptionally quiet and vibration-free, Handy Power requires virtually no maintenance and is highly reliable thanks to brushless technology. Handy Power can be disinfected externally.

Micromotor features:

- 1,000 up to 40,000 rpm.
- possibility of pre-setting maximum speed



Piezosteril 6 / Piezolith 6

Versatile and multifunctional ultrasound handpieces suitable for prophylaxis, endodontics and periodontal procedures. Available with or without fibre optic for LED lighting, the handpieces offer the following performance:

- perfectly linear, controlled ultrasonic vibration (free from parasitic lateral vibration) with frequency constantly self-regulated according to load and tip condition.
- extensive power adjustment range

- power is self-adjusting as a function of workload: this prevents heating of the handpiece or cooling liquids
- coolant delivery adjustable from zero to max flow rate
- completely autoclavable



Goldspeed Handpieces

Contra-angles and straight handpieces designed to meet all-round dental needs, built from special materials by applying high precision micromechanics processes, with the following features:

- full titanium body (except E16)
- built-in anti-retraction device
- internal spray
- built in fibre optics (S1-L, M5-L, R20-L)
- ceramic bearings (M5-L)
- external and hollow bur cooling (R20-L)
- completely autoclavable

T-LED

Lightweight, compact curing light with an exclusive design that allows use as both a direct version or 120° angled version.

Features:

- high power LED up to a maximum of 2,200 mW/cm²
- 430 - 490 nm emission band
- 6 pre-set programmes
- autoclavable light guide



Silent Power Turbines

With the Silent Power range of turbines, the perceived operating noise has been more than halved compared to a traditional turbine. Genuine comfort with outstanding performance:

- 57 dB(A) compared to the 62/64 dB(A) of conventional turbines (the perceived noise doubles every 3dB)
- ceramic bearings
- superior performance and long life
- minimised vibration
- 350,000/400,000 rpm.
- 2/4 jet spray system: highly efficient cooling with independent water and air nozzles

Assistant's side



Assistant's module

Mounted on a single or double-jointed arm (optional), the module has four housings for:

- 2 cannulae: mist suction (large) and saliva suction (small)
- 2 optional instruments (syringe and curing light or camera handpiece)

The suction tubing, extracted when in use, is supported by a removable guide that helps it slide more smoothly.

The tubing can be disconnected for disinfection purposes.



The ceramic cuspidor bowl is perched on the unit body. It can be rotated within the operating area so it is easy for the patient to reach when rinsing.

The dentist can choose to replace the cuspidor bowl with the rotating stainless steel tray holder module.

Where access to the interior of the unit body is required, routine maintenance tasks are made easier by the fully removable side hatch.

The assistant's module, equipped with a control panel featuring membrane-protected keys for patient chair, operating light, cup fill and cuspidor bowl rinse, also includes the Autosteril ST (Simple System) disinfection system start key.



A line designed to provide comfort and support



Headrest and armrests

The headrest supplied as standard is double-jointed and features mechanical adjustment plus a sliding support. A 3-axis version with pneumatic release is available as an optional. This allows optimal positioning of the patient's head, thus improving the dentist's posture during treatment.

The pneumatic release is activated/deactivated simply by pressing a small button located at the height as the nape of the neck. New swivel armrests on both sides can be rotated forwards, providing patients with easier access to the seat and dentist and assistant with better access to the patient.

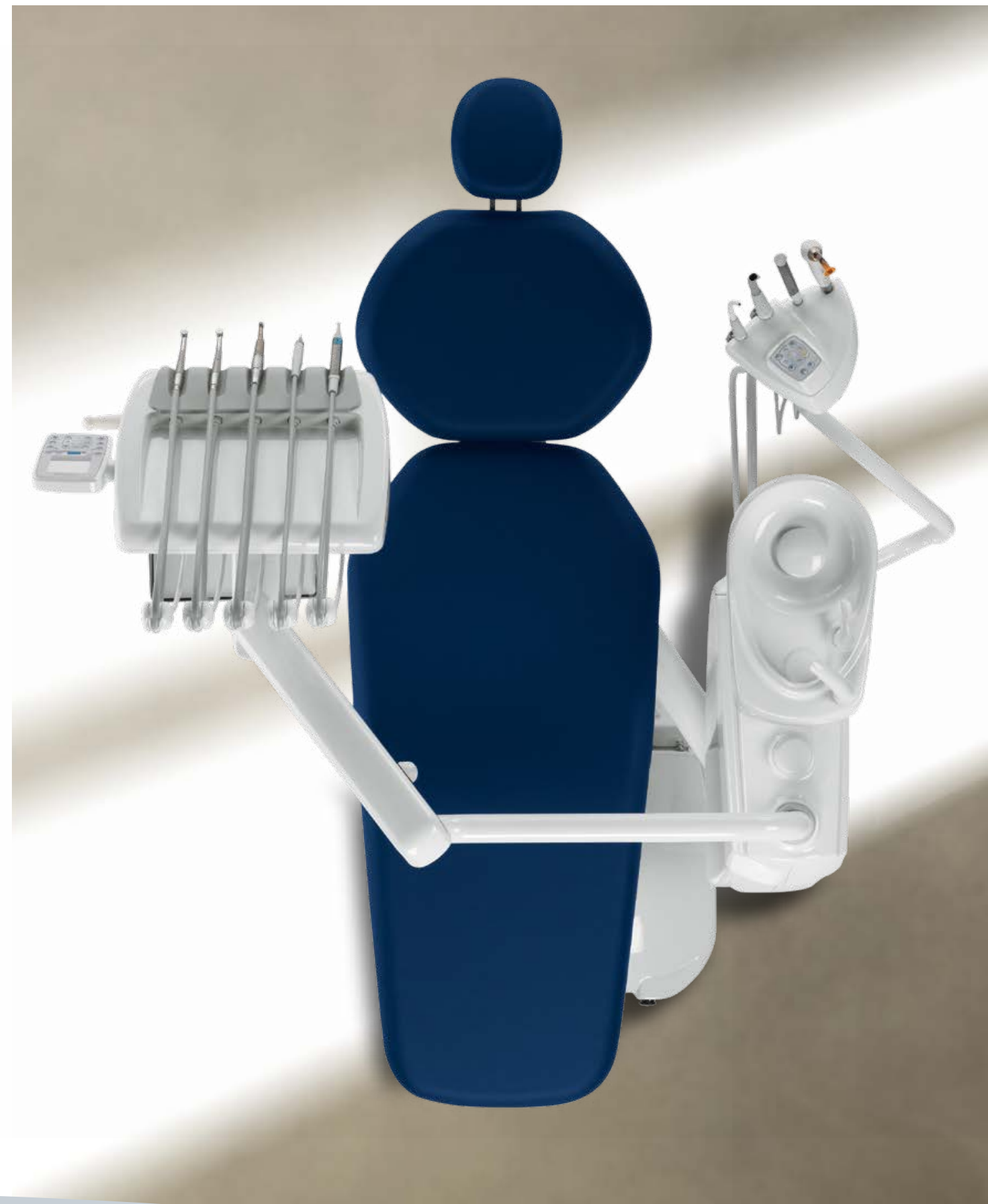
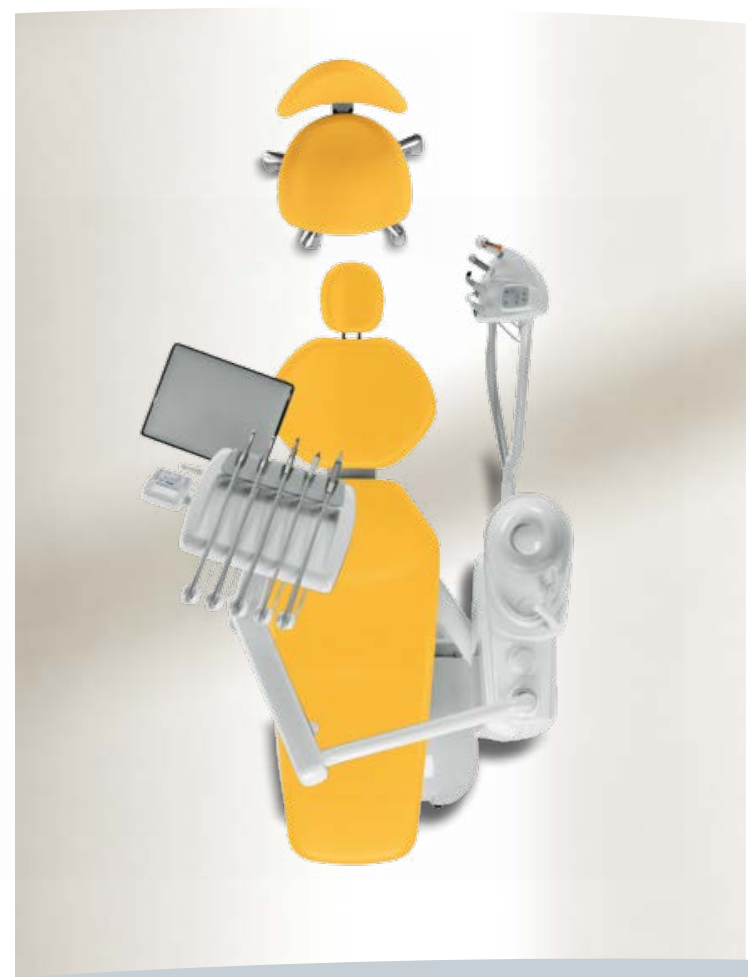
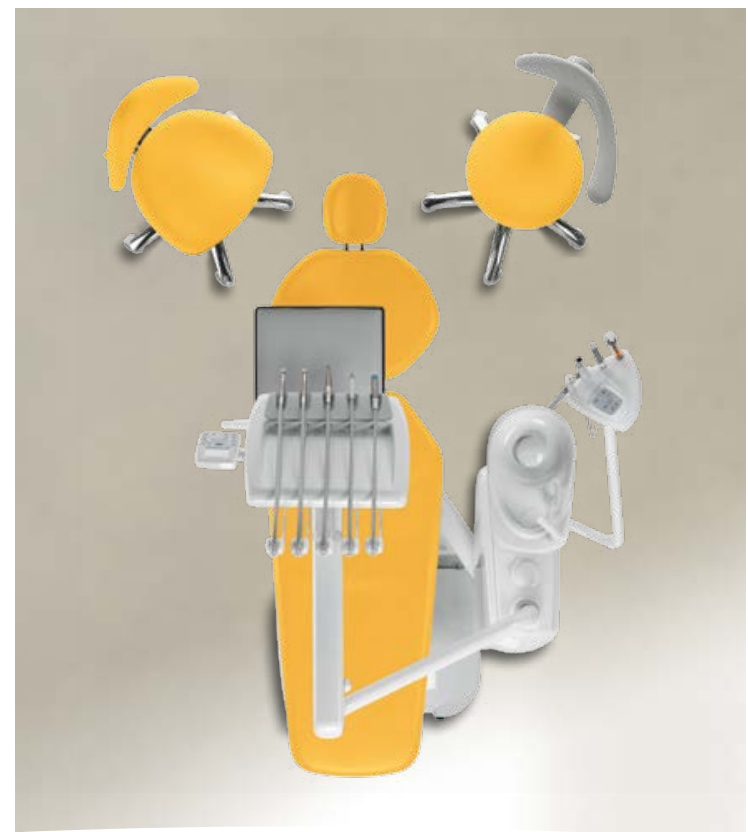
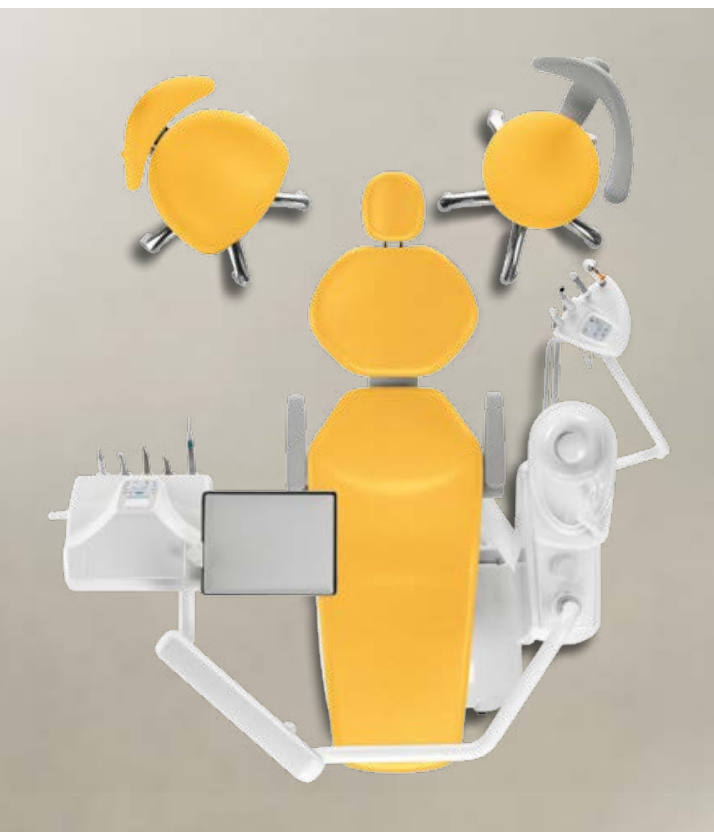
Dama patient chair



Featuring seamless elastic Skai padding, the patient chair can be lined with special padded upholstery that ensures proper anatomical support during prolonged treatment sessions.

Stools are also available in colours to match those of the selected upholstery, stools feature adjustable seat height and backrest tilt (dentist) and also allow the armrest (assistant) to be switched from one side to the other. The extension kit and footrest ring are optional.

Type-approved to lift up to 190 kg, the patient chair has been designed for persons of all builds. A specially shaped lumbar area lets dentist and assistant move in close to the patient from both sides, while thin profiling gives dentists the space needed to work comfortably with their legs beneath the backrest. Synchronisation between backrest and seat, plus an anti-collision device, ensures that patient chair movements are perfectly harmonious with patient anatomy. It is possible to programme and recall 4 working positions, the patient entry/exit and rinse positions and return to the last working position.





Foot controls

The foot control range includes 6 models:

- ① Lateral slide Foot Control (wired/wireless)
- ② Pressure-operated Foot Control (wired/wireless)
- ③ Power Pedal Foot Control
- ④ Multifunction Foot Control

Being able to control multiple dental unit functions via the foot control demonstrates a conscientious approach to hygiene, one that has ensured the available foot-operated functions include:

- Progressive instrument activation
- spray selection
- chip air/water activation
- patient chair direct/programmed movement control
- light on/off (available on multifunction foot control)
- freeze-frame camera

Both the lateral slide and the pressure-operated foot controls are available in the wireless version. Because there are no wires the unit can now be positioned as desired without creating any hindrance, allowing for more comfortable on-patient treatment. Lithium batteries ensure that the unit can go more than two months between recharges, in any case it is supplied with a lead for fast connection to the dental unit so that recharging can also be carried out during work.

Suction Stop device on chair base

By pressing this foot control on the chair base, suction can be temporarily suspended.

Peripheral devices incorporated on the dental unit



① Venus LED

Operating lamp with long-lasting, low-consumption LED light source plus 3-axis rotation for perfect illumination of the operating area.

Technical features:

- maximum light intensity 50,000 Lux
- colour temperature: 5,000 K
- potentiometer to adjust light intensity
- No Touch sensor to switch on and adjust
- easy-to-clean hermetically sealed front protective screen
- handles can be cleaned in an autoclave



② Venus Plus

High performing operating light with rotation movement on three axes for accurate light adjustment to the oral cavity.

Technical features:

- colour temperature: 4,900 K
- adjustable light intensity from 8,000 to 35,000 Lux
- front protective screen
- removable handles suitable for cold-disinfection
- rear fan

③ Venus E

Operating light with front protective screen and rotation around 3 axes.

Technical features:

- colour temperature: 4,100 K
- light intensity up to 26,000 Lux
- removable handles suitable for cold-disinfection

To see which devices, among the lamps and foot controls, are supplied as standard or as an optional, please refer to the table at the end of the catalogue.





Medicalview Monitor

Choosing a double-jointed arm lets dentists shift the monitor and position it within the treatment area according to their individual needs (an option particularly recommended for the touch-screen version). In addition to comfortable use for both dentist and assistant, it also ensures greater involvement of the patient when sharing the outcome of treatment via on-screen imagery.

PC connection

The monitor comes ready for connection to a PC via a lead or HDMI connector. On the touch-screen version a USB port provides a further connectivity option.

Multimedia System



① C-U2

Ready for instant use, this intra-oral camera generates immediate, crystal-clear images that the dentist can easily share with the patient.

Key benefits:

- light, ergonomic, easy to position
- freeze-frame function at the touch of a finger
- effective diffusion of light in the oral cavity thanks to the highest illumination rating in its category



Mounted on the dental unit operating light column, the 19" LED monitor with 16:9 format waterproof screen is an excellent high-tech, ergonomic, image-based communication and diagnostic tool.

Low-power LED light sources provide excellent contrast and bright colours, making images decidedly sharper.

The Medicalview Monitor is Medical Device 93/42-certified.

② C-U2 PRO

The C-U2 PRO camera, together with the LED monitor, constitutes an optional integrated system that gives the dentist's work true added value. C-U2 PRO provides images via three different focal adjustments and, thanks to its slim profile, ensures easy access to the oral cavity:

- Macro: applies a magnifying factor to enhance perception of the smallest details
- Endo: allows for complete inspection of the oral cavity
- Extra-oral: provides a comprehensive record of the dentist's work.



Effective defence for exceptional safety

Active hygiene devices



Hygiene systems

Supplied ready for the incorporation of scientifically proven hygiene devices, the Puma ELI design concept aims to minimise any risk of cross-contamination and is DVGW certified.

The A.C.A. spray anti-retraction system, supplied as standard on all dynamic instruments, prevents aspiration of any contaminants during the instrument stopping phase and prevents cross-contamination between patients.



Autosteril ST

To ensure rigorous disinfection of the spray water feed circuit, the Autosteril ST (Simple System) carries out semi-automatic cycles with 10-minute contact times. To start the process, the instruments must be arranged above the cuspidor bowl in the special container. The start key is located on the assistant's control panel and the progress of the disinfection sequence is illustrated on the dentist's module digital display. Castellini recommends the use of Peroxy Ag+, a disinfectant with a 3% hydrogen peroxide content which is made even more effective by the addition of silver ions that boost its biocide action.

A separate water feed system eliminates the presence of any contaminants in the water. The pressurised 1-litre container can easily be reached from the front of the unit body, allowing it to be replaced quickly. The bottle with the grey stripe is for distilled water while the one with the yellow stripe is used for the sanitisation of spray circuits with disinfectant liquid. The latter is used for disinfection with the semi-automatic Autosteril ST system.



Protection against Legionnaire's disease

Water quality can be safeguarded by adding Peroxy Ag+ disinfectant, this provides real-time defence against bacterial contamination (e.g. Legionnaire's disease and other bacteria) and also brings about the conditions that prohibit microbial colonisation and multiplication.

Hygiene products recommended by Castellini

- Ster 1 Plus decontaminating detergent for surface applications
- Ster 3 Plus decontaminating detergent for surgical suction lines

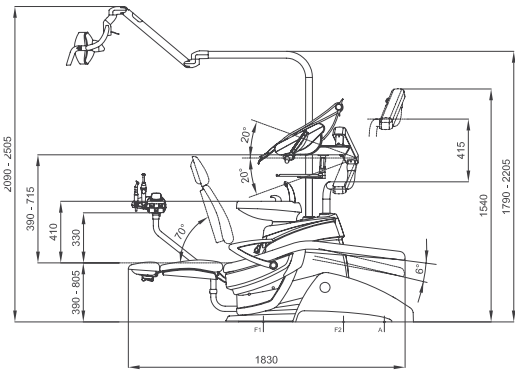
Passive hygiene systems



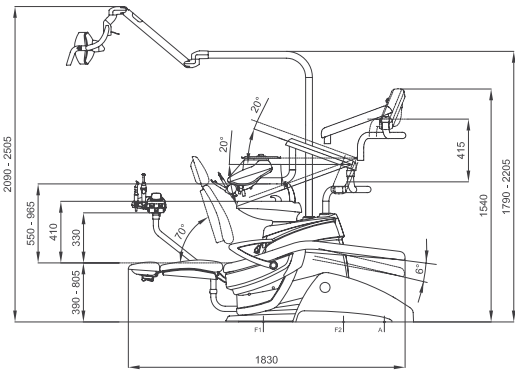
To maintain outstanding levels of hygiene on both the dental unit and in the workplace, Castellini has developed an advanced passive protection concept. Medical staff and patient alike can count on constant protection from numerous elements specifically designed to minimise any risk of contamination:

- removable autoclavable parts:
 - ceramic cuspidor bowl
 - cup-and-bowl-fill unit
 - silicone instrument support mat
 - cannulae holders
- scaler, Implantor LED micromotor and turbines are completely autoclavable
- syringe handle and tip are completely autoclavable
- removable, disinfectable dentist's module grip
- curing light with autoclavable light guide
- washable and disinfectable control panel with protective membrane
- removable, disinfectable suction tubing and slide guide
- unit and chair surfaces can be washed and disinfected
- seamless patient chair upholstery with antibacterial treatment

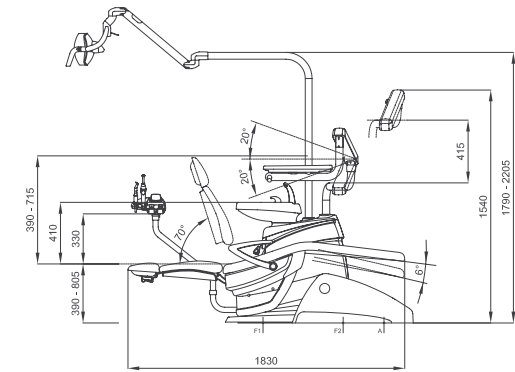
Puma Eli



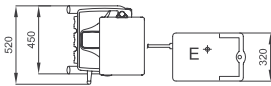
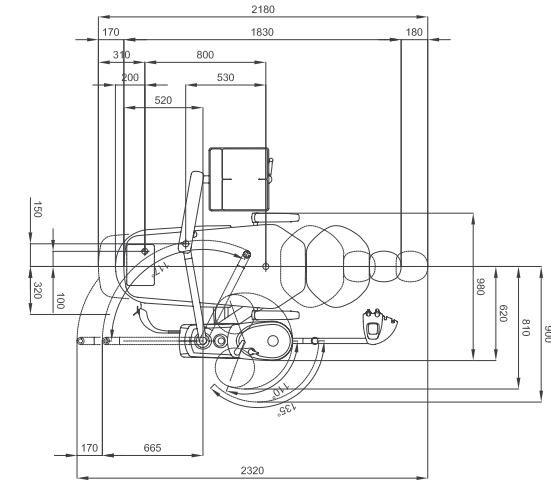
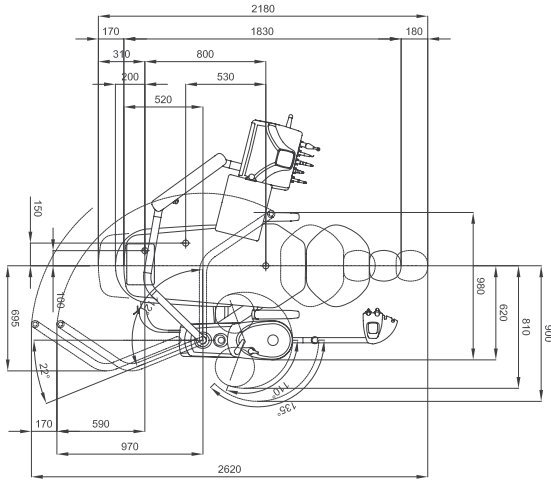
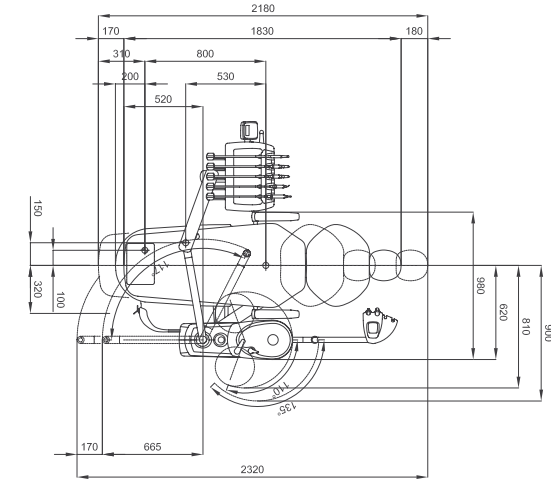
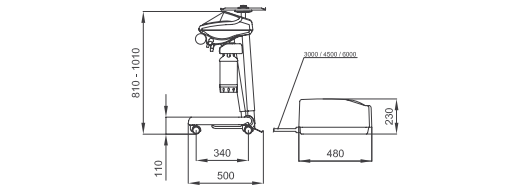
Puma Eli CP



Puma Eli Orthodontic



Puma Eli Cart



	Over the patient delivery system	Hanging tubes	Cart	Ortho
Hygiene system				
Separate Supply System (Tank for independent water supply)	○	○	○	○
Autosteril ST (Semiautomatic system for water circuit disinfection)	○	○	○	-
Time Flushing (quick wash cycle of the water circuit)	○	○	○	○
Dentist's module				
Kit turbine complete with Silent Power Silver 2 handpiece	●	●	●	-
Kit turbine complete with Silent Power Silver 2L fibre optics handpiece	○	○	○	-
Kit turbine complete with Silent Power Silver 4L fibre optics, quick coupling handpiece	○	○	○	-
Kit turbine complete with Silent Power Gold fibre optics, quick coupling, titanium handpiece	○	○	○	-
Kit turbine complete with Silent Power Gold Miniature fibre optics, quick coupling, titanium handpiece	○	○	○	-
Kit Micromotor Handy Power (1,000 - 40,000 rpm - 3 Ncm)	●	●	●	-
Kit Micromotor Handy Power LED fibre optics (1,000 - 40,000 rpm - 3 Ncm)	○	○	○	-
Kit Micromotor Implanor LED fibre optics (100 - 40,000 rpm - 4.5 Ncm)	○	○	○	-
Kit Piezosteril 6 scaler	○	○	○	-
Kit Piezolight 6 scaler with fibre optics	○	○	○	-
Kit T-LED curing light	○	○	○	-
Kit for instrument lever stops	○	-	-	-
Kit 3-way stainless steel syringe	●	●	●	-
Kit 6-way stainless steel syringe	○	○	○	-
Tray holder on dentist's module	●	○	○	-
Assistant's module				
Kit T-LED curing light	○	○	○	○
Kit 3-way stainless steel syringe	○	○	○	○
Kit 6-way stainless steel syringe	○	○	○	○
Tubing kit with fibre optic Midwest coupling	-	-	-	●
Kit Micromotor Handy Power LED fiber optics (1,000 - 40,000 rpm - 3 Ncm)	-	-	-	○
Kit Micromotor Implanor LED fiber optics (100 - 40,000 rpm - 4.5 Ncm)	-	-	-	○
Detachable and disinfectable instrument hoses	●	●	●	●
Disinfectable smooth twin-chamber suction tubing	○	○	○	○
Autoclavable suction cannulae	●	●	●	●
Assistant's module with control panel complete with control switch for chair and operating light mounted on single arm	●	●	●	●
Assistant's module with control panel complete with control switch for chair and operating lamp mounted on double articulated arm	○	○	○	○
Operating lamp				
Venus E Lamp	●	●	●	●
Venus Plus Lamp	○	○	○	○
Venus LED Lamp	○	○	○	○
Unit body				
Swivel and removable ceramic bowl	●	●	●	●
Cup filler water heater	○	○	○	○
Instrument spray heater	○	○	○	○
Multimedia cables and PC connections	○	○	○	○
Auxiliary tray holder module complete with large tray on self-balancing double-jointed arm	-	-	○	○
Tray holder module in place of bowl	○	○	○	○
Patient chair				
Double-jointed headrest	●	●	●	●
Pneumatic headrest with 3-axis movement	○	○	○	○
Lateral slide foot control with joystick	●	●	●	●
Lateral slide foot control with joystick wireless	○	○	○	○
Pressure-operated foot control with joystick	○	○	○	○
Power Pedal foot control	○	○	○	○
Multifunction foot control with joystick and light switch-on	○	○	○	○
Pressure-operated foot control with joystick and spray on/off kit wireless	○	○	○	○
Padded upholstery	○	○	○	○
Left armrest	○	○	○	○
Right armrest	○	○	○	○
Quick coupling for air/water supply for external devices	○	○	○	○

● = supplied as standard ○ = Optional - = Not available

Colour range

- 102 Atlantic blue

113 Pacific blue

106 Mediterranean blue

136 Indian blue

101 Caribbean green

123 Polynesian green

103 Nevada yellow
- 115 Scottish salmon

132 Blueberry violet

134 Japanese wisteria

135 Venetian red

130 Graphite black

121 Anthracite grey

137 Bright silver

Padded upholstery

- 197 Caribbean green

198 Atlantic blue

196 Mediterranean blue

195 Scottish salmon

199 Anthracite grey

193 Polynesian green

194 Venetian red

